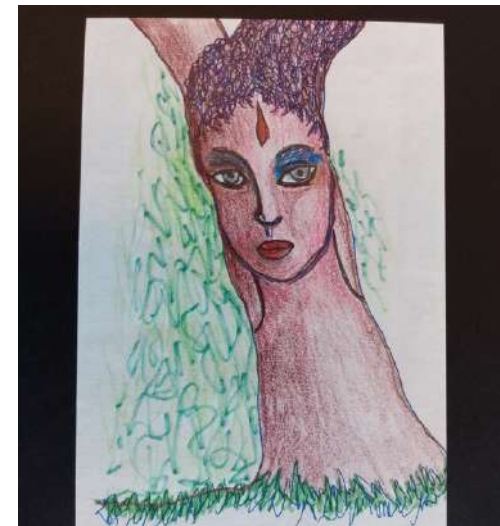


# A journey

into the artistic world of Richard Battistuzzi





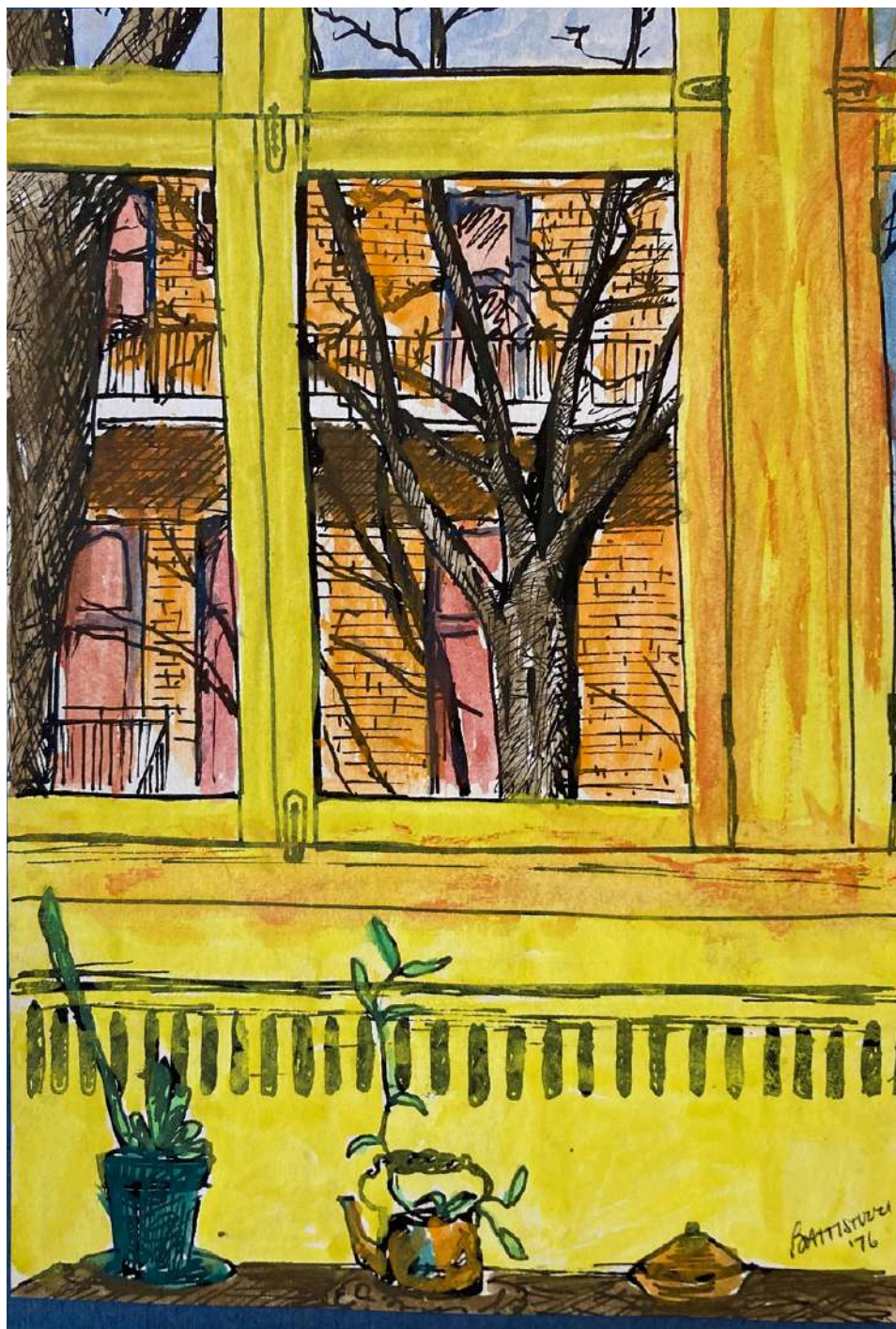


*Richard Battistuzzi*

Artist and Aphasic Person

Richard has always been a self-taught artist. Aphasic after a stroke in 2004, this former accountant continues to express his passion despite aphasia.





## *A View of the World*

Rosa, Richard's wife and primary caregiver, explains that Richard has been painting for as long as she can remember.

Here is one of his first works, painted in 1976.



Jewel of earth garden  
forced sublimely  
from dugged dust  
star beam child  
we explore each other  
in a reluctant gamble

BATTISTOZZI  
6/07

## *Jewel of earth*

Richard is also a poet, as evidenced by this poem from 1987 with enigmatic and mysterious verses:

***Jewel of earth garden  
forced sublimely  
from rugged dust  
star beam child  
we explore each other  
in a reluctant gamble***

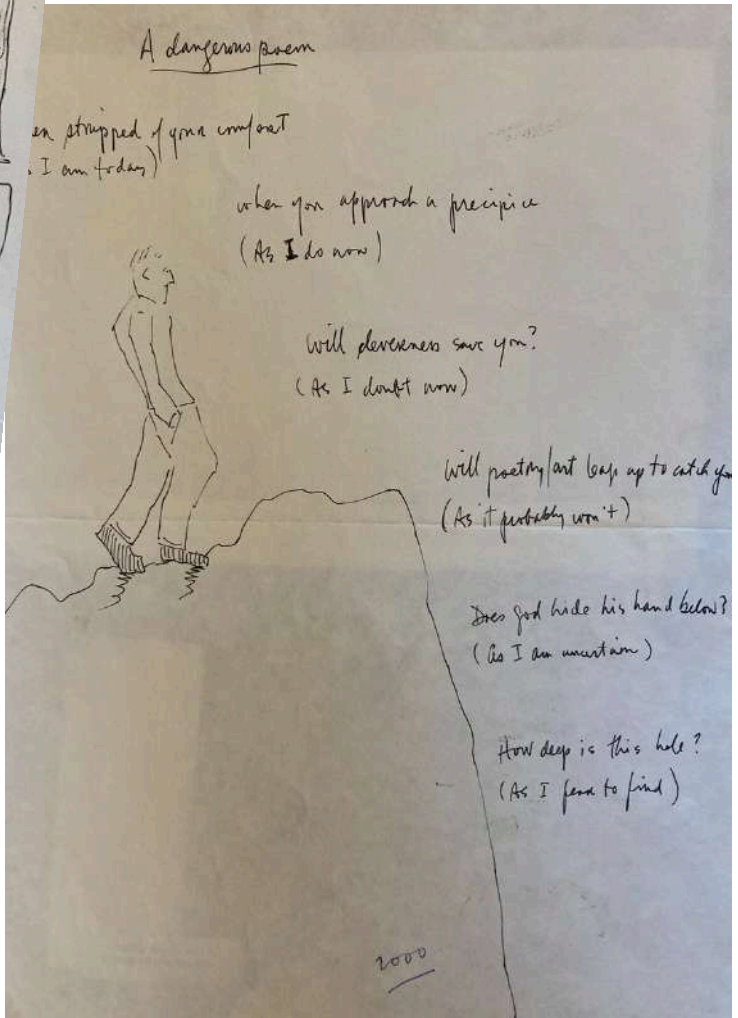


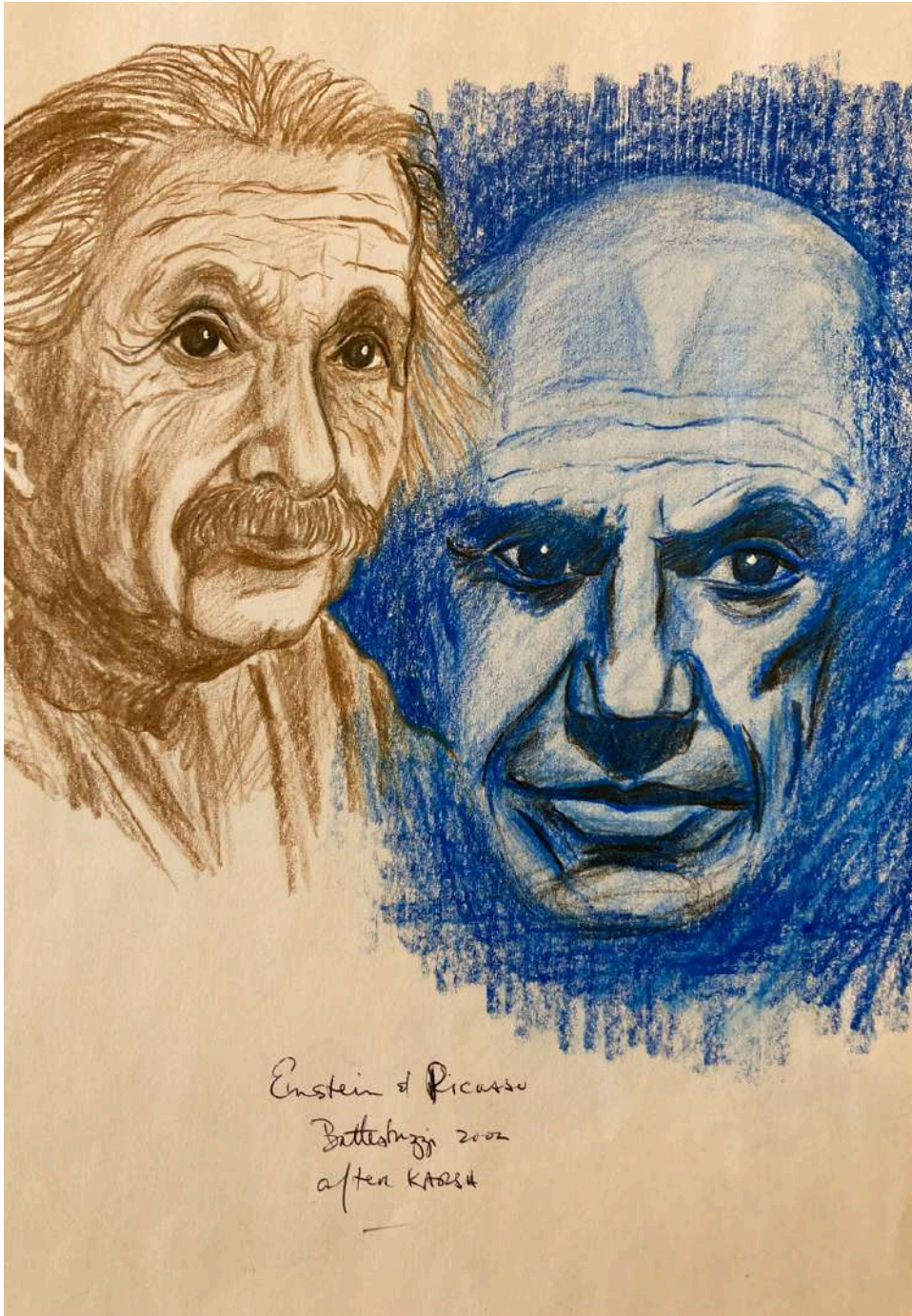
# The Hunt



Before aphasia, Richard loved telling stories in the form of comic strips.

# A dangerous poem





## *Einstein and Picasso*

What impresses about Richard is the diversity of his works, which revolve around thematic series.





## *Revisiting His Scales*

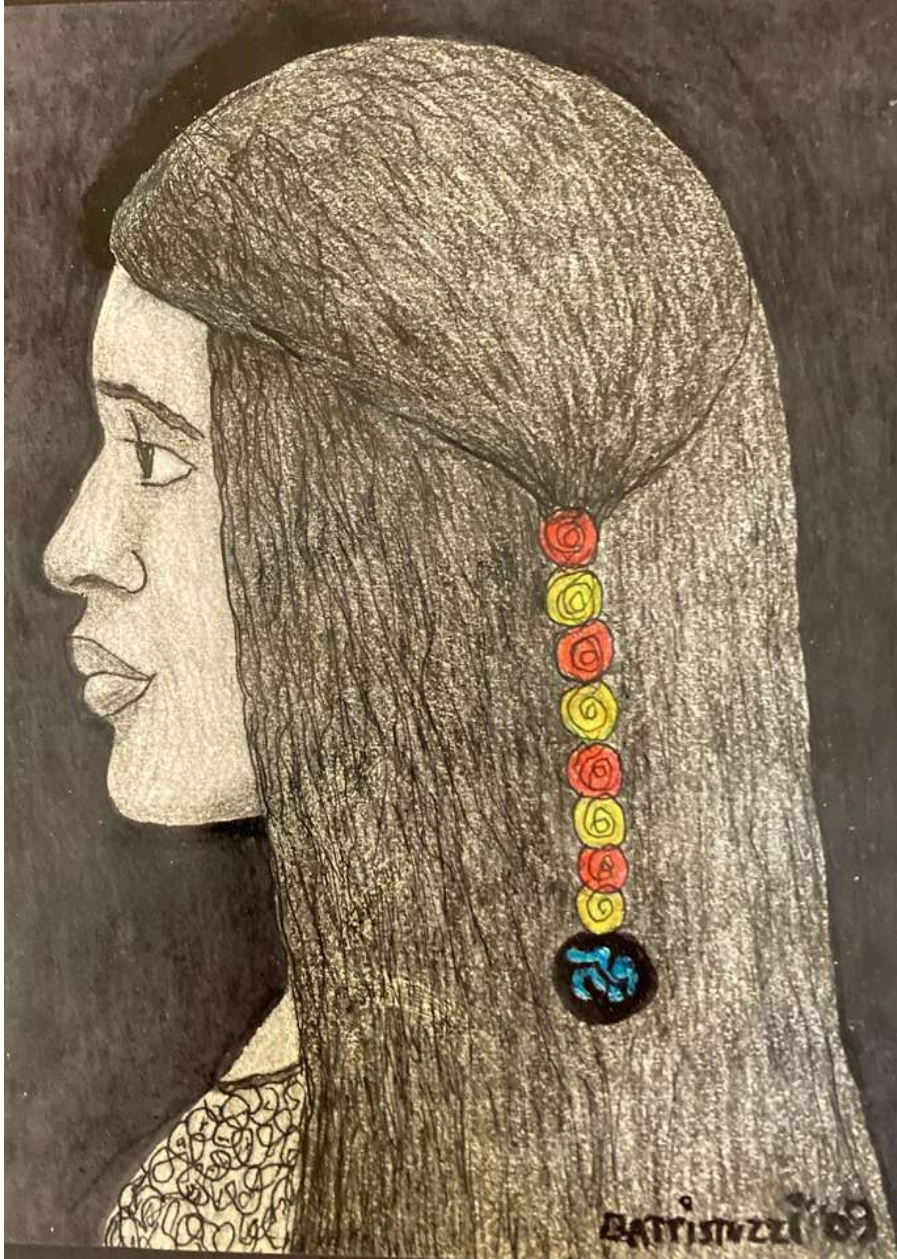
With aphasia, Richard had to learn to use his left hand as his right hand is paralyzed. His first post stroke creation in 2005 resulted in a work full of charm. Isn't this the magic of art?



## *Explorations*

Richard's post stroke works are guided by the exploration of new artistic forms, bolder than ever before.





## *Representing Aphasia?*

Aphasia can be accompanied by severe physical disabilities such as hemiplegia, which results in paralysis on one side of the body. In several of his works, Richard represents his characters asymmetrically, showing only one side of the body. According to his wife Rosa, this symbolizes aphasia.



## *Communicating Through Art*

Richard tried to participate in art groups, but his aphasia made communication difficult. He often found himself isolated. He then dedicated himself to his art in solitude. For Rosa, his wife, this practice has therapeutic benefits for him. Through his works, Richard has found a way of expression that is uniquely his own.

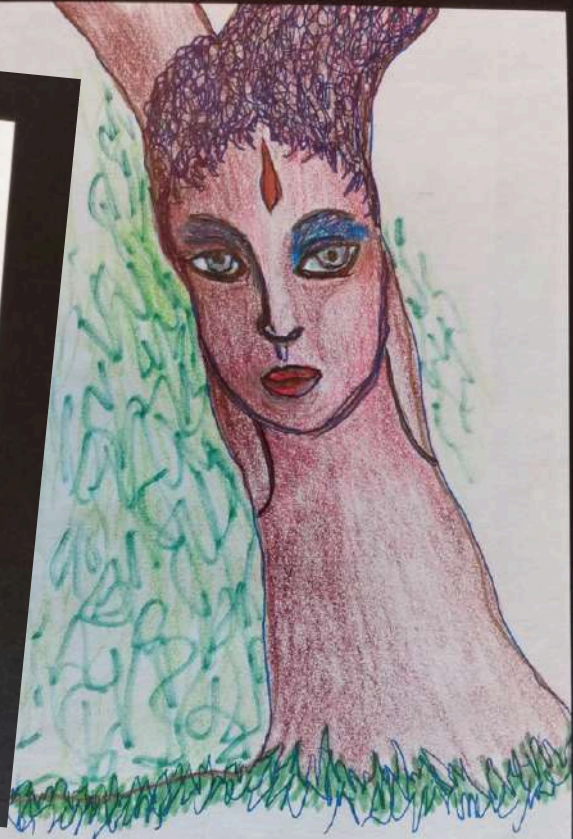


série Head of a nymph



R. BATTISTUZZI  
2008

SOPHIE ANDERSON -  
HEAD OF A NYMPH



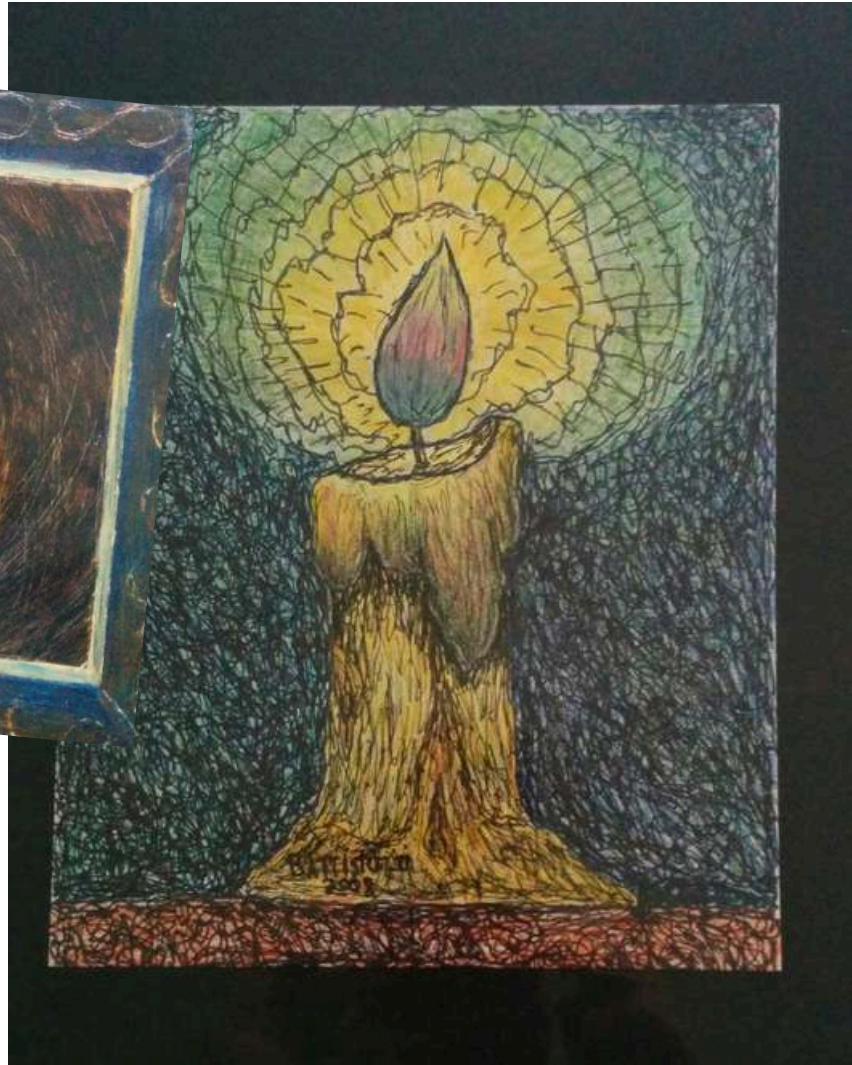
BATTISTUZZI  
2008

The boat



Richard loves to paint boats, even though he is not particularly passionate about sailing. Could this be a reflection of his taste for artistic exploration?

The flame



This inner flame, fueled by passion, seems intact in Richard, despite his aphasia.



# Journey to Egypt



TOMB OF NEFERTARI, Dynasty 19, circa 1304-1237 B.C. Queen Nefertari, the principal consort of Ramesses II, raises her arms in a gesture of worship in this image from her lushly decorated tomb in the Valley of the Queens.

RB 3-8-13



Thank you



### Copyright

The works presented here are the exclusive property of Richard Battistuzzi. Any reproduction, distribution, or commercial exploitation is prohibited. These creations are protected by current copyright laws.



**AQPA**  
Association québécoise  
des personnes aphasiques